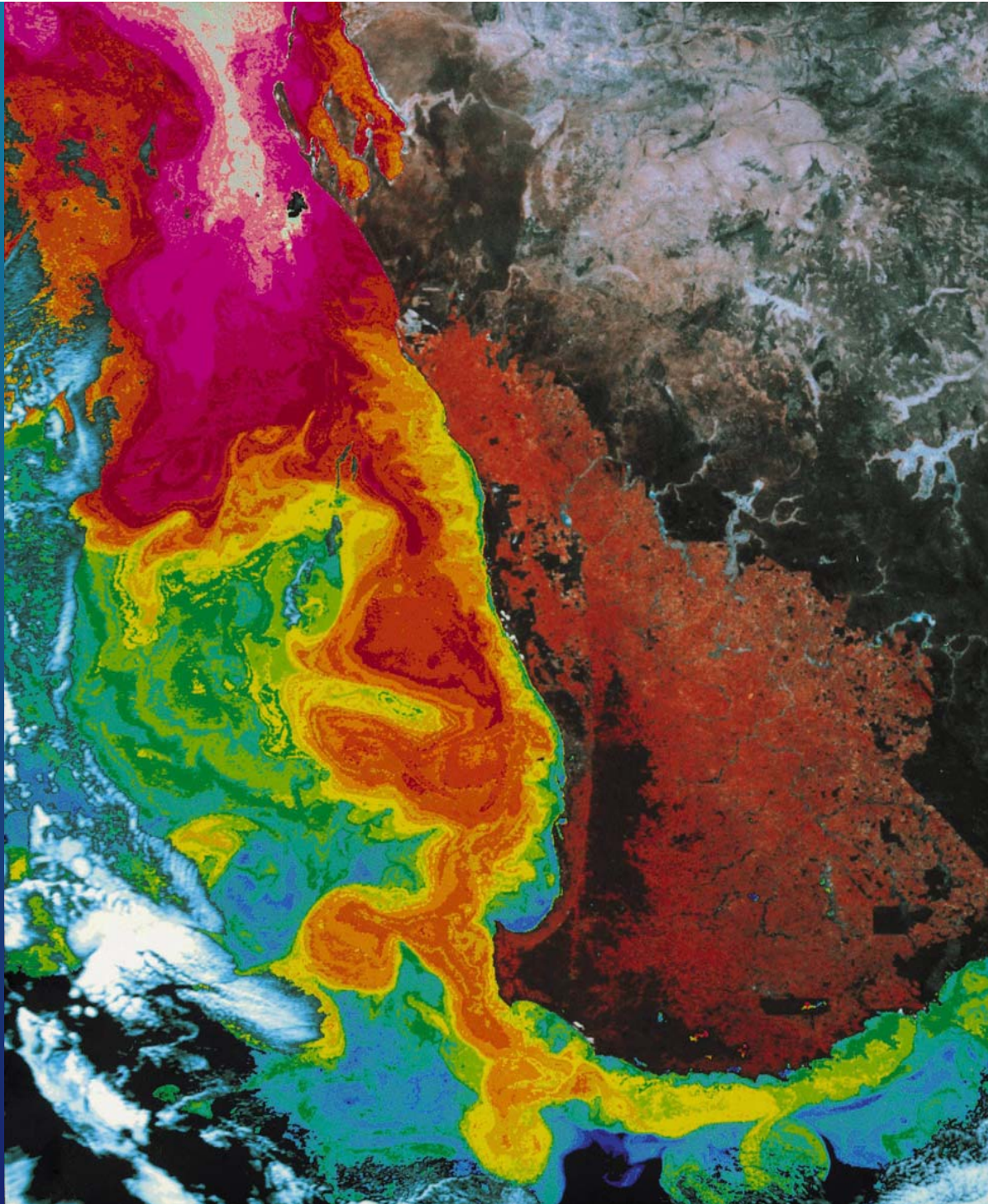
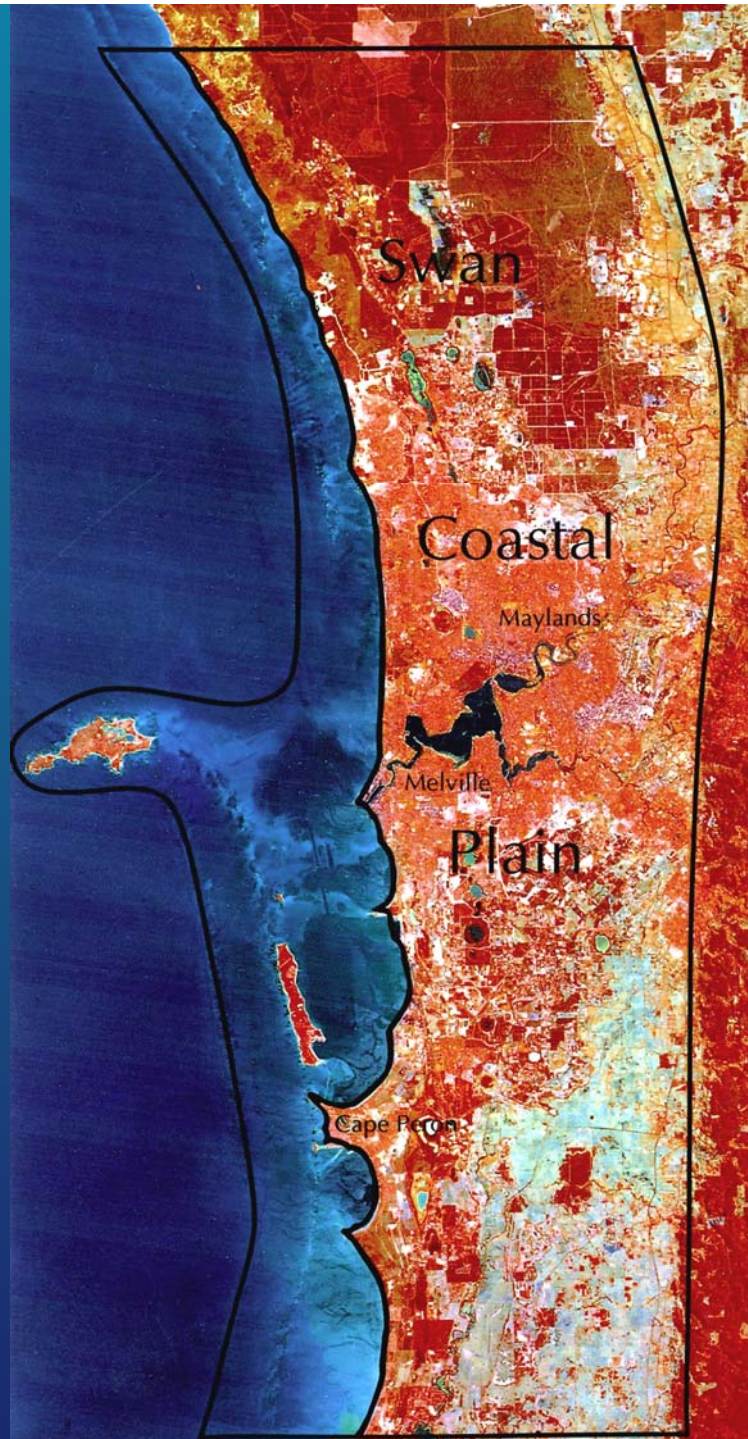


CRC WORKSHOP

CWHM: Cockburn Sound and Surrounds

September 2003





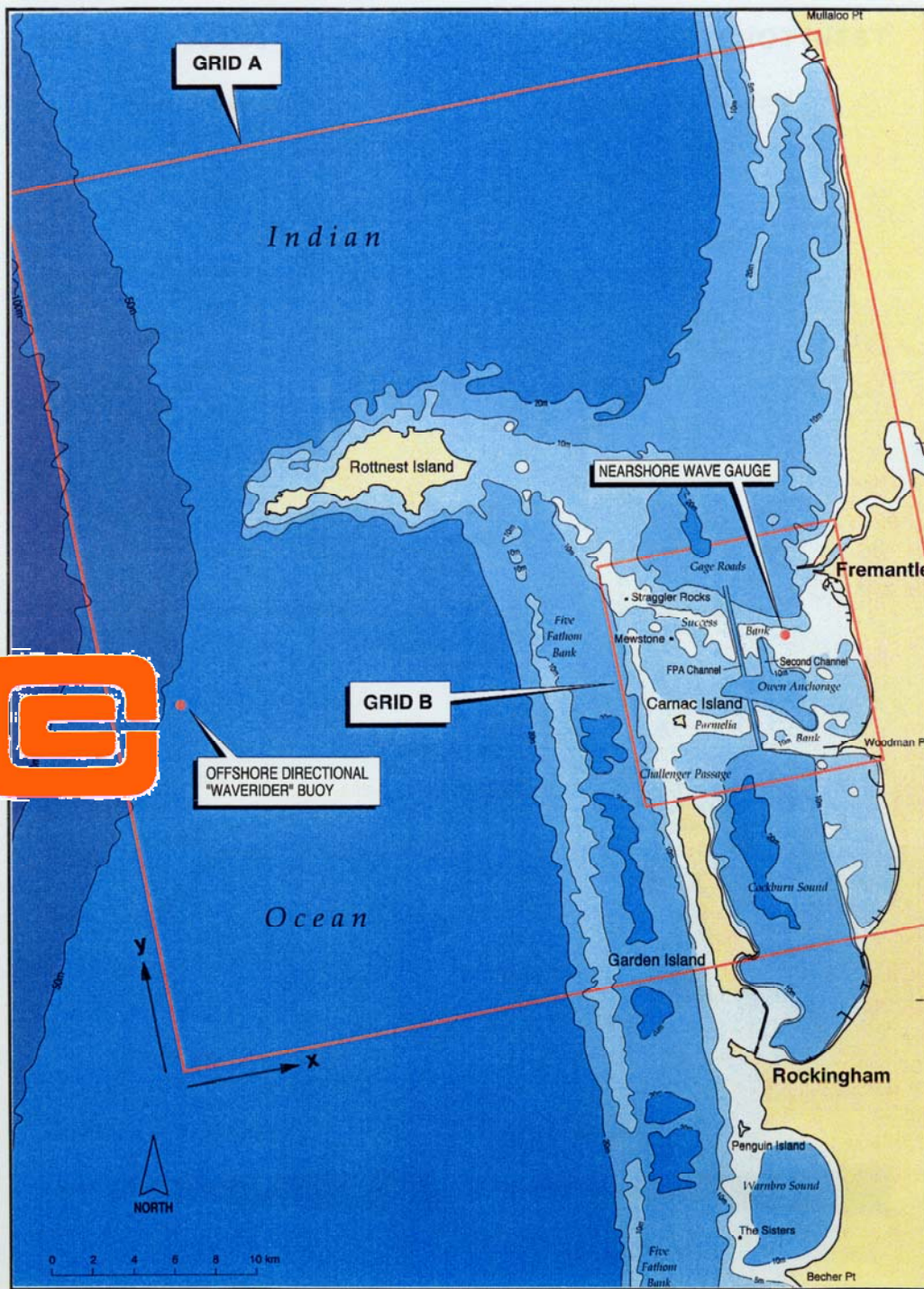


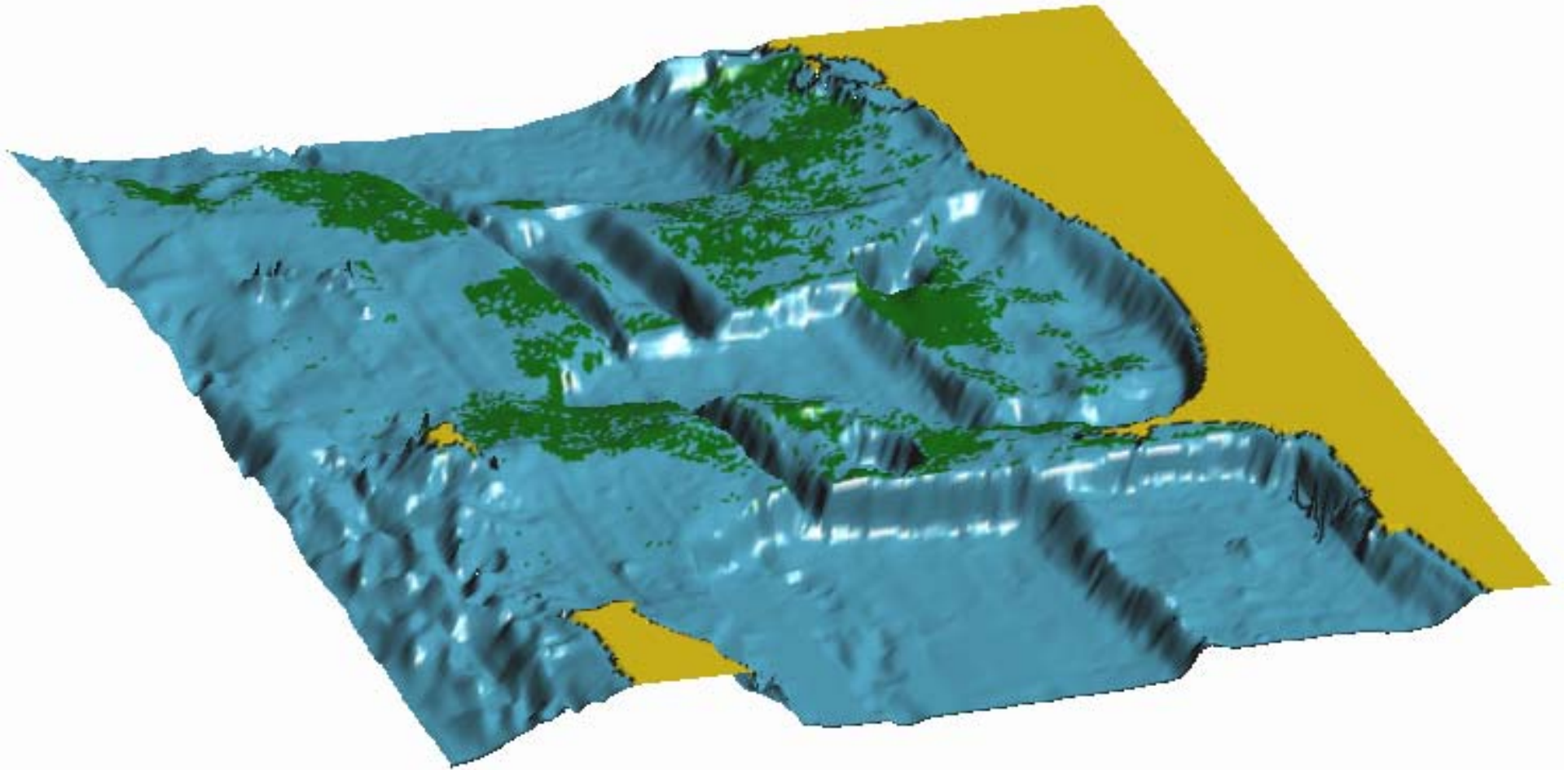
Quantify environment physical complexity



Eg. Sponge & coral spicules
Spicules 0.1-5 mm silicious spikes
~ 2 x water density
Organised into matrixes in animals
Backscatter????

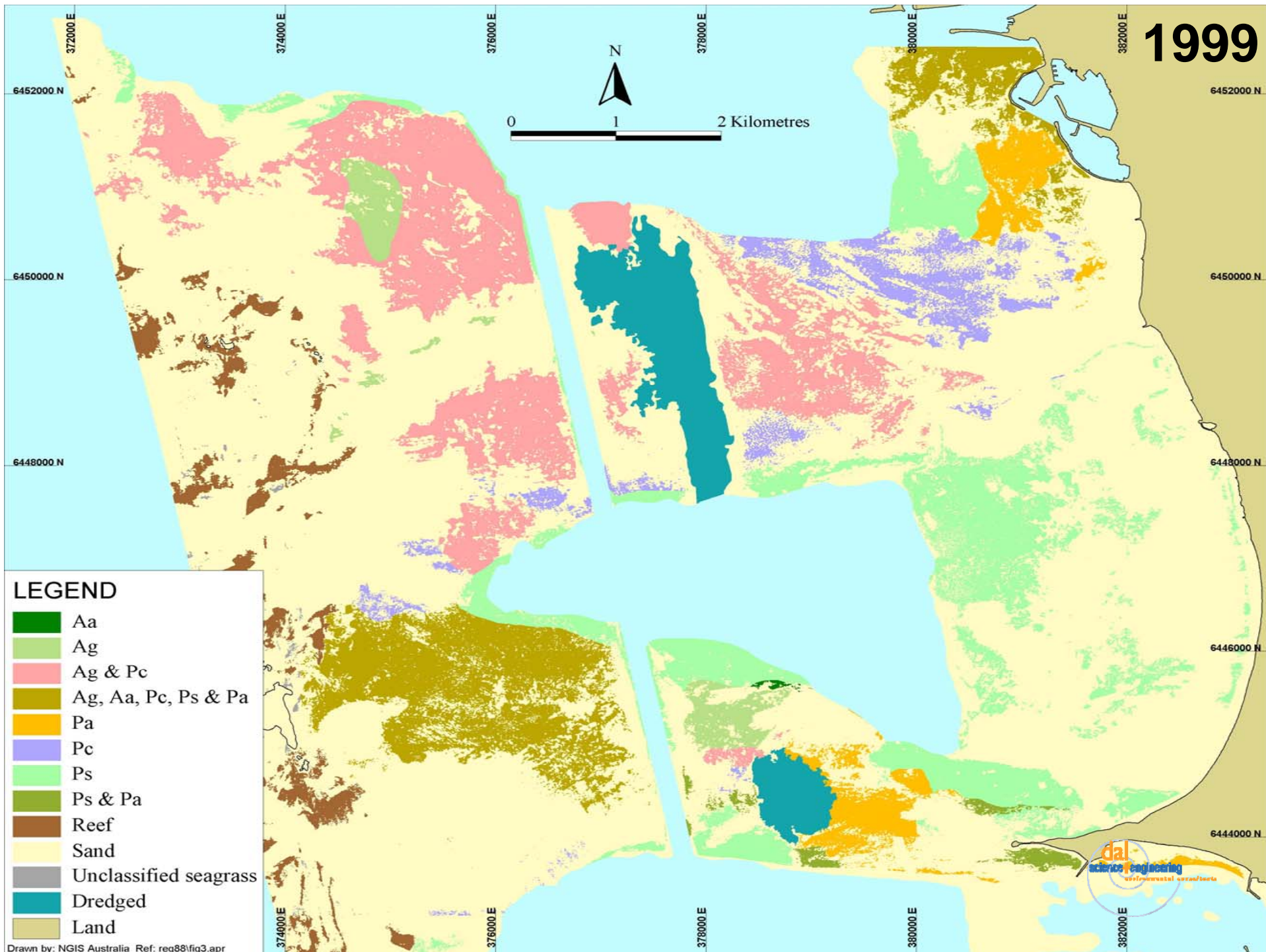
Explore relationship between
backscatter & epi-benthos







1999



LEGEND

- Aa
- Ag
- Ag & Pc
- Ag, Aa, Pc, Ps & Pa
- Pa
- Pc
- Ps
- Ps & Pa
- Reef
- Sand
- Unclassified seagrass
- Dredged
- Land

Drawn by: NGIS Australia Ref: req88/fig3.apr



1999



2001





Project Discussion

(See Draft 1 document)

- Objectives
- Techniques/approaches
- Activities and Timing
- Requirements/Logistics